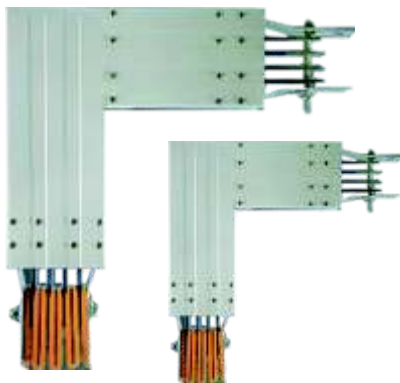


COMPLETE SETS OF EQUIPMENT

RMSX

Intensive Bus Duct



APPLICATION

RMSX series bus duct are applied to the power supply and distribution system of AC three-phase-four-wire, three-phase-five-wire, 50-60Hz, rated voltage 660V and rated operational current 2500-4000A, to assume the task of distribution. It's suitable for load connection of low-voltage distribution board and big, middle-size, as connection of high current to transmission and used for power transformer, low-voltage distribution board and heavy load. RMSX are mainly used for electric welding, industrial furnace, factory, high-rise building and others of power station, electric manufacturing.

RMSX series sealed bus duct are mainly made up by nameplate, high strength case, copper bar and bus bar, support insulator, PVC heat-shrinkable tubing, F4 regular basis and other components. Bus duct by different current standard, transfer all need use low-voltage transfer type distribution box, acting on connect (transfer) and others with related power of low-voltage distribution system.

The series bus duct is suit for large span installation, convenience installation, safe and reliable structure, flexible wiring, strong inter change ability and other characteristic.

RMSX

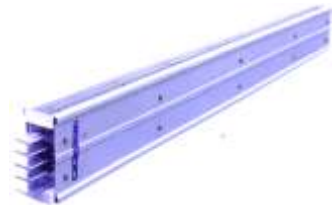
密集型母线槽

Structure



Straightway

Standard length for straightway unit is 3m, 6m, 9m, meet the workshop long-span installation, can design socket in any position as needed, minimum spacing for sockets are no less than 0.5m.



Reversing unit

RMSX bus duct provided L type, T type, Z type and deformed bend type are designed by standard, can convenient to change the movement of bus duct system to adapt complicated site condition. At the same time, have small outline size, good appearance and save space for user.

Standard size:

L type: 500 × 500

T type: 500 × 500 × 500

Z type: 500 × 300 × 500

Deformed bend Type: 500 × 500 × 500 × 500



RMSX

Intensive Bus Duct

Plate grafting unit

RMSX bus jack box can design two kinds box: steel case and whole resin case, the maximum current up to 630A, components are installed into box can handpick as user needed.



L型弯头, 节省空间
"L" type elbow for saving room

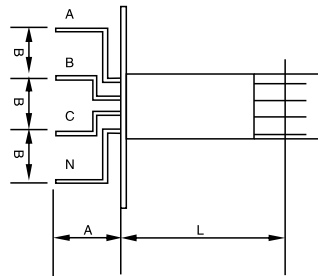
标准的Z型弯头
"Z" type normal elbow

异形弯头, 满足复杂的现场需求
Un-normal elbow for real requirements

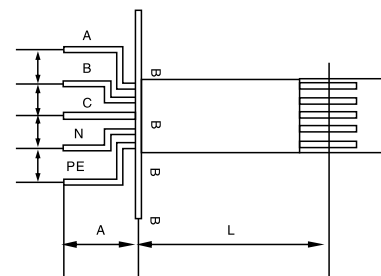
Inlet wire unit

Generally, inlet wire unit was used for the top position of bus duct, convenient for bus duct to connecting with cable and distribution cabinet. It can join up any size cable, the top inlet line box is divided into three ways to outlet, cable in outlet line position with protection tube.

(图3) 始端: Fig3 Start and end



三相四线制进线单元
3-phase 4-line inlet unit



三相五线制进线单元
3-phase 5-line inlet unit

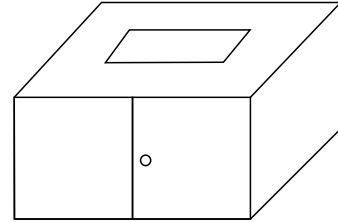
图3
Fig3

RMSX

密集型母线槽

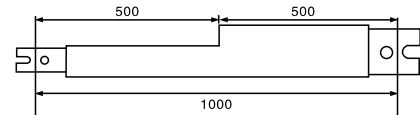
★ Inlet wire box

Power input equipment is made up by inlet wire box and inlet wire unit. It was divided into two type of with switch and without switch, model and specification of switch inlet wire box can selected by user.



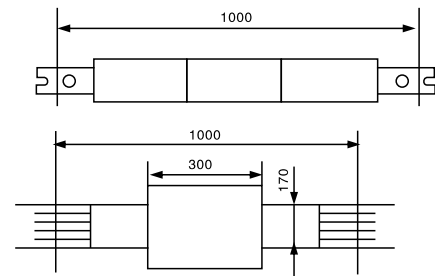
Reducing unit

Reducing unit is used for connect different rated current branch line unit filter section. Standard length for reducing unit is 1m, can from any current step to another current level of 100A ~ 5000A.



Expansion unit

Expansion unit is used for absorbing bus branch line change of bus duct axial variation produced by thermal expansion. General, installation length for bus duct is more than 80m and must add a section in place.



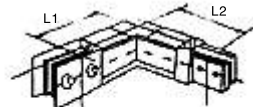
COMPLETE SETS OF EQUIPMENT

RMSX

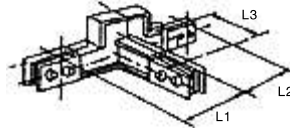
Intensive Bus Duct

Various bending unit

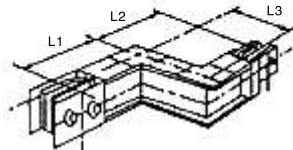
Bending unit have L type, Z type, Z type, T type and Cross type, used for connecting for horizontal and verticality distribution bus duct and change the direction of bus duct.



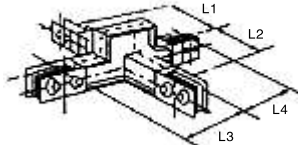
L型水平弯头(AL)
"L" type horizontal elbow(AL)



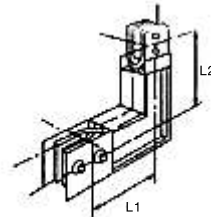
T型水平弯头(AT)
"T" type horizontal elbow(AT)



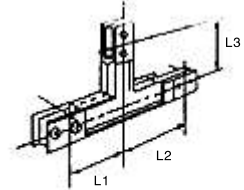
Z型水平弯头(AZ)
"Z" type horizontal elbow(AZ)



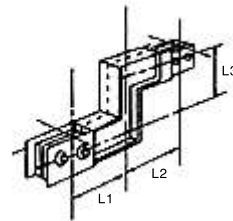
十字型水平弯头(AX)
"+" type horizontal elbow(AX)



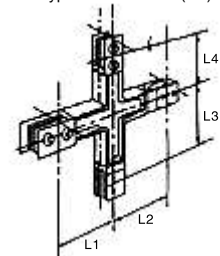
L型垂直弯头(BL)
"L" type vertical elbow(BL)



T型垂直弯头(BT)
"T" type vertical elbow(BT)



Z型垂直弯头(BZ)
"Z" type vertical elbow(BZ)



十字型垂直弯头(BX)
"+" type vertical elbow(BX)

Main line rated current (A)	100-250	3150-3500	4000-5000
L1	500mm	650mm	800mm
L2			
L3			
L4			

Top box

The top box is installed in the terminal of bus duct, as safety protection, Various specification bus duct have terminal box matched.

RMSX
COMPACT BUSWAY



Connection for system

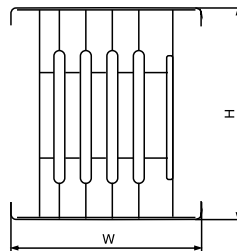
Connection of RMSX bus duct system unit use special connector, the product is patented product, internal adopt flexible connecting to ensure connect reliable between units and need not add expansion joint fo

Building system must design prevent the produce of cigarette and fire, prevent the diffusion of cigarette and fire and effective extinguish method. Provide the measure to save human and animal when fire. RMSX series bus duct system can make out to fireproofing to meet the requirement.

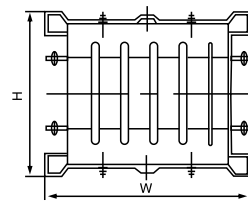


RMSX copper bus

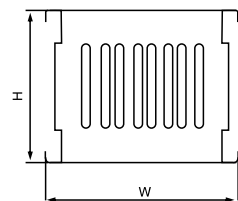
rated current	3-line			4-line			5-line		
	W(mm)	H(mm)	Weight (kg/m)	W(mm)	H(mm)	Weight (kg/m)	W(mm)	H(mm)	Weight (kg/m)
250	159	91	17	159	91	19	159	91	21
400	159	101	19	159	101	21.5	159	101	24
630	159	111	21	159	111	24	159	111	27
800	159	126	24	159	126	28	159	126	31.5
1000	159	141	26.5	159	141	32	159	141	35.5
1250	159	176	33.5	159	176	42	159	176	46
1600	159	196	41.5	159	196	45	159	196	59
2000	154	136	74	234	136	76	234	136	84
2500	154	165	75	234	165	90	234	165	88
3150	154	201	85	234	201	107	234	201	120



CCX6五线制
CCX6 5-line



200A-1000A



1250A-4000A

CCX6三相四(五)线制
CCX6 3-phase and 4-line or 5-line

RMSX

Intensive Bus Duct

RMSX standard and requirement

RMSX series bus duct can prevent interphase short circuit and take away ground fault by outside humidity and dusty because of bus is sealed into case and will not be affected by environment and dirty. At the same time, ensure personal safe when touch because the case is multiple earth. Due to the shielding effect of the housing and the vortex circulation, so greatly diminished magnetic field, external short circuit, electric power bus between the greatly reduced; when the current through the bus, the shell out of the loop induction also shield the magnetic field outside the shell, to solve the Steel near heat problem; the shell can be used as forced cooling channels to improve the carrying capacity of the bus; installation and maintenance workload is small.