

Table 1

Model No.	Rated current (pole)	Using type	Rated operational current(A)	Rated insulation voltage (V)	Control power (kW)	Connection type
RDCH8-25	16 (1P/2P)	AC-7a	16	500	3.5	With soft-cable: 2×2.5mm ² With hard-cable: 6mm ²
		AC-7b	7	500	1.0	
	20 (1P/2P)	AC-7a	20	500	4	
		AC-7b	8.5	500	1.2	
	25 (1P/2P)	AC-7a	25	500	5.4	
		AC-7b	9	500	1.4	
RDCH8-63	25 (3P/4P)	AC-7a	40	500	16	With soft-cable: 2×10mm ² With hard-cable: 25mm ²
	32 (2P)	AC-7a	32	500	7.2	
	32 (3P/4P)	AC-7a	32	500	21	
	40 (2P)	AC-7a	40	500	8.6	
	40 (3P/4P)	AC-7a	40	500	26	
	63 (2P)	AC-7a	63	500	14	
	63 (3P/4P)	AC-7a	63	500	40	

Table 2

Pole	Rated current (A)	Rated voltage (V)	NO NC
1P	16~25	220/230	10
2P	16~25	220/230	20
	40~63		02
3P	25	380/400	30
	40~63		
4P	25	380/400	40
	40~63		04

4.3 Operation performance: Under the condition of the ambient temperature is in the range of -5°C~+40°C, charge the contactor attract coil with rated control power voltage U_s and warm it to the stable state, the contactor should attract stably in any value between the 85% and 100% of rated control power voltage U_s ;

it should release and break between 75% and 20%(2P) or 10%(1P) of the rated control power voltage U_s .

4.4 Mechanical life: no less than 1 million times.

4.5 Electrical life: no less than 100 thousands times.

4.6 Wiring diagram: see Fig1 to Fig5

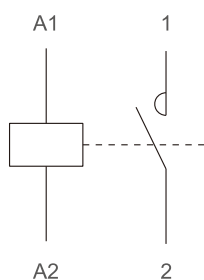


Fig1 16/10~25/10

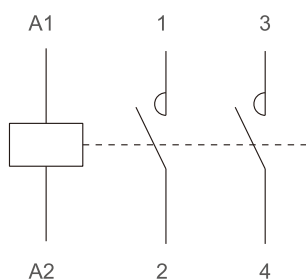


Fig2 16/20~25/20

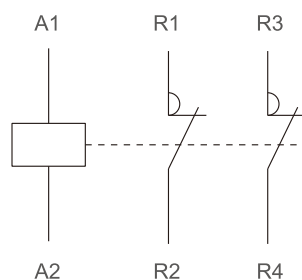


Fig3 16/02~25/02

AC CONTACTOR

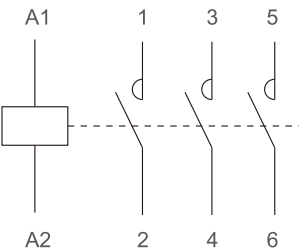


Fig3 16/30~63/30

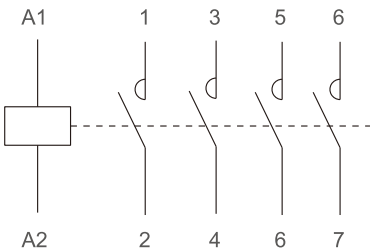


Fig4 25/40~63/40

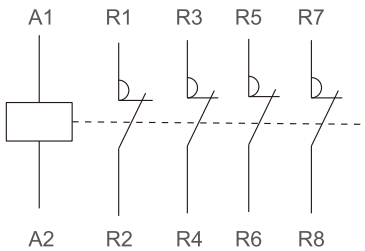


Fig3 25/04~63/04

Overall and Installation Dimensions:

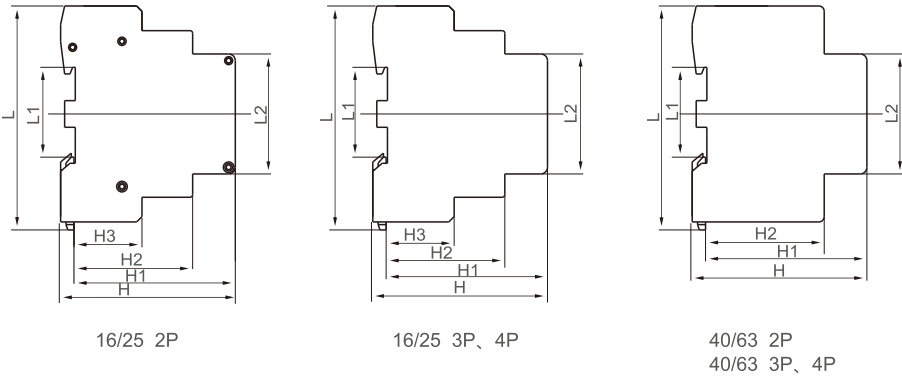
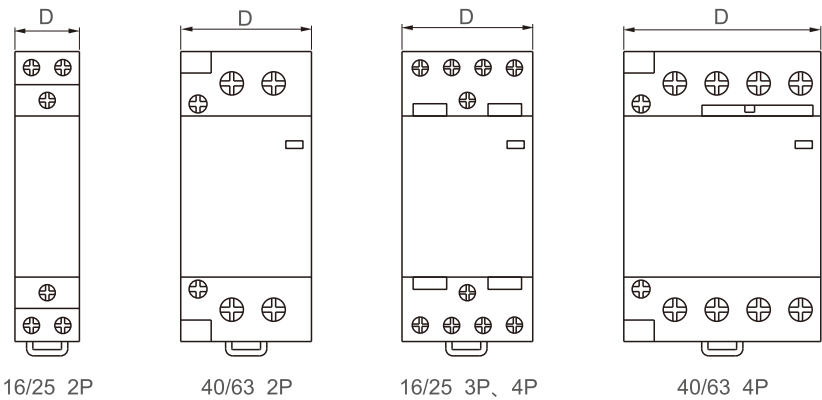


Table 3

Model No.	Rated current(Poles)	D	L	L1	L2	H	H1	H2	H3
RDCH8-25	16/25 1P,2P	18	85	35.5	45.5	66	61	45	23
	16/25 3P,4P	36	85	35.5	45.5	66	61	45	23
RDCH8-63	40/63 2P	36	85	35.5	45.5	66	61	45	-
	40/63 3P,4P	54	85	35.5	45.5	66	61	45	-