

RDC8Z Series high voltage DC contactors



Excellent long service life

Threshold voltage, accurate control of suction release voltage. Wide voltage suction, three-speed suction circumference. Built-in anti-surge function to protect equipment from damage.



Applied to a variety of scenarios

It is mainly used for electric vehicle charging piles, automotive battery distribution systems, solar power generation equipment and other new energy-related infrastructure.



Excellent performance and ease of handling

The product contact seal meets the requirements of IP67, small size, more space saving, large transmission power, more environmentally friendly.



Complete specifications, more choices

Current specifications cover 50A to 300A, allowing customers to have more choices.

RDC8Z series high voltage DC contactor

Product overview

RDC8Z series high voltage direct current contactor (referred to as contactor), mainly used in the rated load voltage does not exceed 1000V, load current does not exceed the rated current of the direct current circuit environment for on-off use. The products are suitable for new energy vehicles, construction machinery, electric vehicles, charging piles, charging stations, communication power equipment, energy storage system, photovoltaic system, uninterruptible power supply and other systems.

Selection guide

RDC8Z	50	1000V
I	I	I
Product	Rated current	Control loop voltage
High voltage DC contactor	50、100、150、200、250、300	DC 1000V

Normal working conditions and installation conditions

- Temperature: -40°C~85°C
- Humidity: 5%~85% RH
- Installation direction: It can be installed at anyAngle according to the customer's installation environment
- Environmental pollution Class (III): The product can be used in an environment where there is conductive pollution, or where dry electrical pollution becomes conductive due to expected condensation
- Vibration impact environment: vibration 5g, impact 10g
- altitude: Below 2000 m

Technical parameters

- Themainloadcontact parametersareshown inTable1.
- AuxiliarycontactparametersareshowninTable2.
- Suction voltage: 9-36V Suction time: ≤30ms
- Release voltage: 5-7V Release time: ≤10ms
- Voltage resistance: 12KVDC between main contacts 1min Between the main contact and the coil 3500VDC 1min
- Insulation resistance: 50MΩ

RDC8Z series high voltage DC contactor

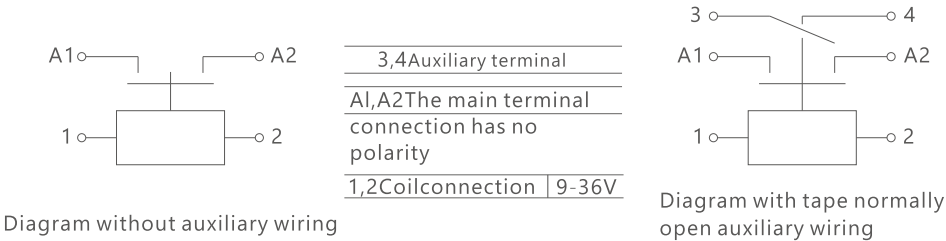
Main technical parameters

Typenumber	RDC8Z-50A	RDC8Z-100A	RDC8Z-150A	RDC8Z-200A	RDC8Z-250A	RDC8Z-300A
Contact form	1K(1NO)					
Contact polarity	Nonpolarity					
Contact resistance	≤0.5mΩ(at 50A)		≤0.5mΩ(at 150A)	≤0.5mΩ(at 200A)	≤0.5mΩ(at 250A)	≤0.5mΩ(at 300A)
Maximum switching voltage	1000VDC					
Maximum breaking current	1000A(320VDC)1times		1500A(320VDC)1times	2000A(320VDC)1times	2000A(320VDC)1times	2000A(320VDC)1times
Mechanical durability	300000times					
Current tolerance	50A,lasting	100A,,lasting	150A,,lasting	200A,,lasting	250A,,lasting	300A,lasting
	130A,60min	130A,60min	200A,60min	400A,60min	400A,60min	400A,60min
	180A,5min	180A,5min	300A,5min	500A,5min	500A,5min	500A,5min
	300A,30S	300A,30S	400A,1min	600A,1min	600A,1min	600A,1min
Electrical durability (resistive load)	1500times (1000VDC,50A)	1000times (1000VDC,100A)	8000times (1000VDC,150A)	5000times (1000VDC,200A)	3000times (1000VDC,250A)	3000times (1000VDC,300A)
	2000times (750VDC,50A)	1500times (750VDC,100A)	10000times (750VDC,150A)	8000times (750VDC,200A)	5000times (750VDC,250A)	5000times (750VDC,300A)
	5000times (500VDC,50A)	5000times (500VDC,100A)	12000times (500VDC,150A)	10000times (500VDC,200A)	8000times (500VDC,250A)	8000times (500VDC,300A)
	20000times (110VDC,50A)	20000times (110VDC,100A)	/			

Table2 Auxiliary contact parameters

Auxiliary contact form	1K/1B/1Z(1NO/1NC/1Z)
Rated current of auxiliary contact	5A
Maximum breaking voltage of auxiliary contact	120VDC

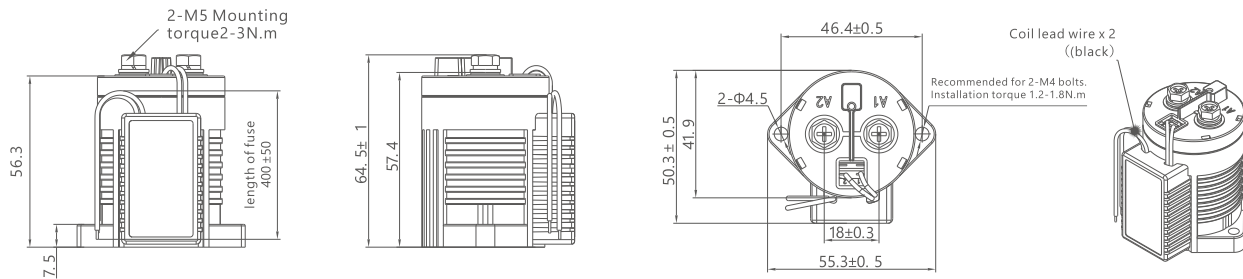
Product wiring diagram



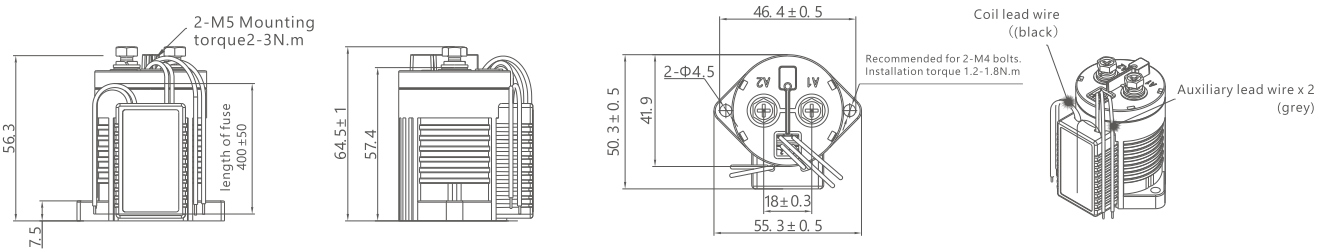
RDC8Z series high voltage DC contactor

Outline dimensional drawing

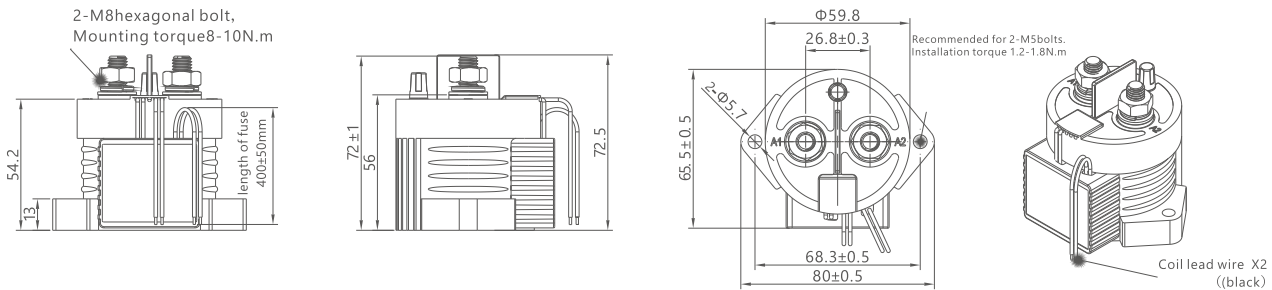
RDC8Z-50~100 Outline diagram without auxiliary contact



RDC8Z-50~100 outline diagram with auxiliary contact



RDC8Z-150~300 Outline diagram without auxiliary contact



RDC8Z-150~300 outline diagram with auxiliary contacts

