

AC CONTACTOR

RDC19B(CJ19)

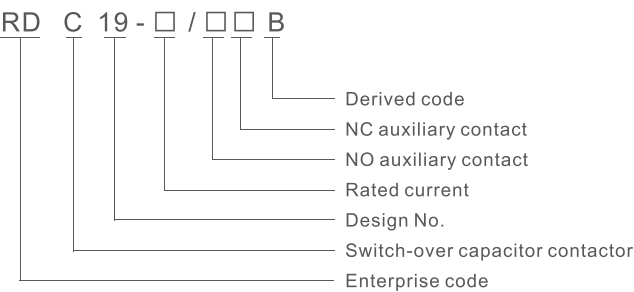
Series Switch-over Capacitor Contactor



Application

RDC19B (CJ19) series switch-over capacitor contactor is suitable for the power circuit of AC50/60Hz, rated power voltage up to 660V and below, for the use of low voltage reactive power compensation equipment added-in or remove the low voltage shunt capacitor. This contactor is equipped with a surge suppression device, and it can effectively restrain the impact of closing inrush current on capacitor and reduce the breaking instantaneous overload voltage without adding the current limiting reactor. It conforms to the standard IEC/EN60947-4-1

Model No.



Normal operating condition and installation condition

- 3.1 Ambient temperature: +5℃~+40℃, average temperature within 24h does not exceed +35℃
- 3.2 Altitude: does not exceed 2000m
- 3.3 Atmospheric condition: when the highest temperature is +40℃, the relatively humidity does not exceed 50%; it can allow relatively high humidity when it is at relatively low temperature, for instance, it reaches 90% when it is at +20℃ , it should take measurement when there have condensation occurred due to the temperature variation.
- 3.4 Pollution grade: 3
- 3.5 Installation category: III
- 3.6 Installation position: the gradient of the mounting surface to the vertical surface does not exceed ± 5°
- 3.7 Impact and vibration: product should be installed and used at the places without obvious shake, impact and vibration.

Wiring principle

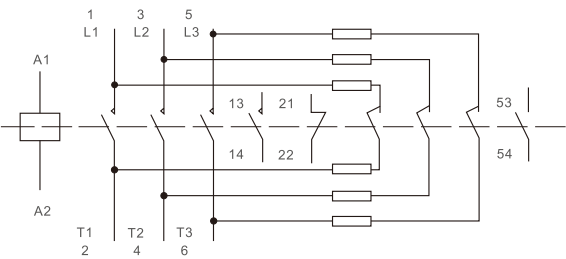


Fig 1 L1~L3 to be connected with the power end, T1~T3 to be connected with the load end.

Main technical parameter

table 1

Model		RDC19-25/□□B	RDC19-32/□□B	RDC19-43/□□B	RDC19-63/□□B	RDC19-80/□□B	RDC19-95/□□B
Controllable capacitor capacity Kvar	220V	6	9	10	15	22	22
	380V	12	18	20	30	40	50
Rated insulation voltage V		660					
Rated voltage V		220/380					
Conventional heating current A		25	32	43	63	87	108
AC-6b Rated current A		17	23	29	43	58	72
Auxi. Wire/Rated current of capacitor A		20Ie					
Control voltage V		48, 110, 127, 220, 380					
Conventional heating current of auxiliary contact A		6					
Operation frequency (times/h)		120					
Electrical life (10000 times)		1					
Mechanical life (10000 times)		10					
Tightening torque of terminal (N·m)		0.8	1.2	1.2	6.0	10.0	10.0

Note: the terminal should be tightened every 1~3 months.

Dimensions

Contactor can be installed by screw, and it also can be installed by DIN rail. Overall and installation dimension of RDC19B to see fig 2 and table 2

table 2

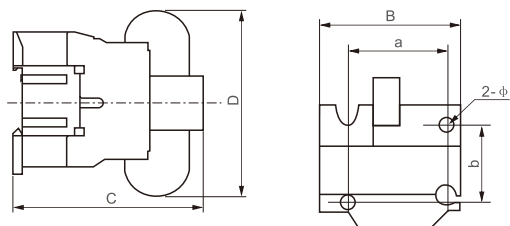


Fig 2 Overall and installation dimension of RDC19B-25/32/43

Model	Overall dimension				Installation dimension			
	A	B	C	D	a	b	Ø	Din rail
RDC19-25/□□B	84	56	130	140	40	50/60	4.5	35
RDC19-32/□□B	87	58	136	140	40	50/60	4.5	35
RDC19-43/□□B	87	58	136	140	40	50/60	4.5	35
RDC19-63/□□B	127	79	150	180	40	100/110	6.5	35 or 75
RDC19-80/□□B	127	85	160	200	40	100/110	6.5	
RDC19-95/□□B	127	85	160	200	40	100/110	6.5	

Auxiliary contacts

Code for the auxiliary contacts to see table 3

Specification	Code for auxiliary contact	Number of auxiliary contacts		Marking	
		NO	NC		
25A, 32A, 43A	20	2	0	20E	13,14;23,24
	02	0	2	02E	11,12;21,22
	11	1	1	11E	13,14;21,22
63A, 80A, 95A	21	2	1	21E	13,14;21,22;33,34
	12	1	2	12E	13,14;21,22;31,32

The coil of RDC19B can be reliably pull-in when it is at 80%~110% of control power voltage (Us), and can be reliably released when it is at 20%~70% of control power voltage (Us)