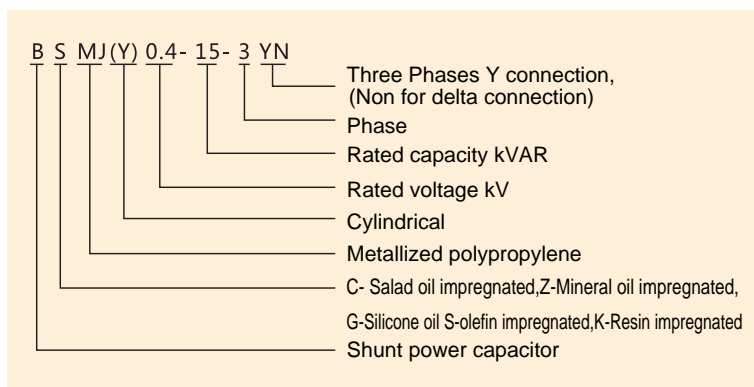


▶ **Application**

BSMJ(Y), BCMJ(Y) series self-healing low-voltage shunt capacitor, is applicable for AC power system of voltage up to 1000V, is used for improving lowvoltage network power factor and voltage quality and decreasing reactive power consumption. This production conforms to the Standard of IEC60831-1996.

▶ **Model No.**



▶ **Characteristic**

3.1 Characteristic

- 3.1.1 Small volume, reliable quality
- 3.1.2 Applicable for the high temperature and large system voltage wave location
- 3.1.3 Good sealing.
- 3.1.4 Firm, convenient installation
- 3.1.5 convenient connecting terminal.
- 3.1.6 Anti-corrosion metal shell

3.2 Notice

- 3.2.1 Overvoltage and overheating would shorten life of capacitor.
- 3.2.2 The following situation should be attention, when install shunt capacitor in the system.
 - a it can not install shunt capacitor directly under serious harmonic. (anti-harmonic reactor need to install)
 - b when transformer does no-load running, capacitor should quit operating.
- 3.2.3 capacitor connecting to circuit needs to delay 3mins and above. Only after breaking power-supply and discharging by short-circuit, it can be touched and measured.
- 3.2.4 MCB should be chosen according to 2-3 times of capacitor rated current.





Capacitor ▶ BSMJ(Y)、BZMJ Series Self-healing Shunt Capacitor

Table1

rated voltage	250VAC、400VAC、450VAC、 525VAC、690VAC、750VAC
rated capacity	1-50kVAR
error	0 ~ +10%
low dissipation factor	lower than 0.10%
junction withstand voltage	1.75Vn10s junction shell 3kVA10s
insulation	junction shell 500VDC 1 min bigger than 100M
Max overload voltage	110%of rated voltage
Max overload current	130%of rated current
self-discharge feature	1min after poweroff,residual voltage decreases to 50V and below

Table2

specification	rated voltage(kV)	nominal capacity(Kvar)	Total capacity(uF)	Rated current(A)	Shape and High(mm)
BSMJ0.4-3-3	0.4(50HZ)	3	59	4.3	A型 H=115
BSMJ0.4-5-3		5	99	7.2	
BSMJ0.4-7.5-3		7.5	149	10.8	A型 H=135
BSMJ0.4-8-3		8	158	11.5	A型 H=175
BSMJ0.4-10-3		10	198	14.4	
BSMJ0.4-12-3		12	238	17.3	A型 H=215
BSMJ0.4-14-3		14	278	20.2	
BSMJ0.4-15-3		15	298	21.7	A型 H=245
BSMJ0.4-16-3		16	318	23.1	
BSMJ0.4-18-3		18	358	26.0	B型 H=215
BSMJ0.4-20-3		20	398	28.9	
BSMJ0.4-25-3		25	498	36	B型 H=245
BSMJ0.4-30-3		30	597	43.3	
BSMJ0.4-40-3		40	796	57.7	B型 H=300
BSMJ0.4-50-3		50	995	72.2	C型

Table3

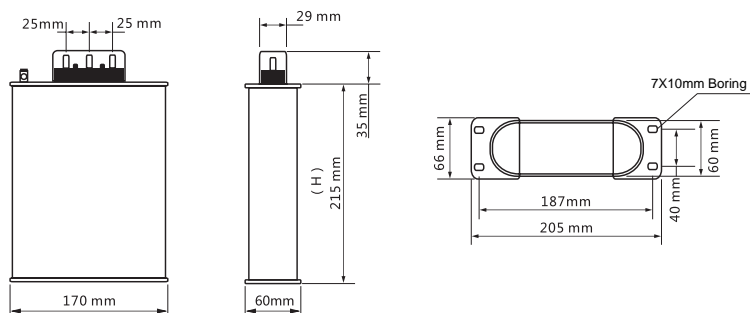
specification	rated voltage(kV)	nominal capacity(Kvar)	Total capacity(uF)	Rated current(A)	Shape and High(mm)
BSMJ0.45-3-3	0.45(50HZ)	3	47	3.8	A型 H=115
BSMJ0.45-5-3		5	78	6.4	
BSMJ0.45-7.5-3		7.5	118	9.6	A型 H=135
BSMJ0.45-8-3		8	126	10.3	A型 H=175
BSMJ0.45-10-3		10	157	12.8	
BSMJ0.45-12-3		12	188	15.4	A型 H=215
BSMJ0.45-14-3		14	220	18	
BSMJ0.45-15-3		15	236	19.2	A型 H=215
BSMJ0.45-16-3		16	251	20.5	

Table3

specification	rated voltage(kV)	nominal capacity(Kvar)	Total capacity(uF)	Rated current(A)	Shape and High(mm)
BSMJ0.45-18-3		18	283	23	A型 H=245
BSMJ0.45-20-3		20	314	25.7	
BSMJ0.45-25-3		25	393	32	B型 H=215
BSMJ0.45-30-3		30	471	38.5	
BSMJ0.45-40-3		40	629	51.3	B型 H=300
BSMJ0.45-50-3		50	786	64.2	

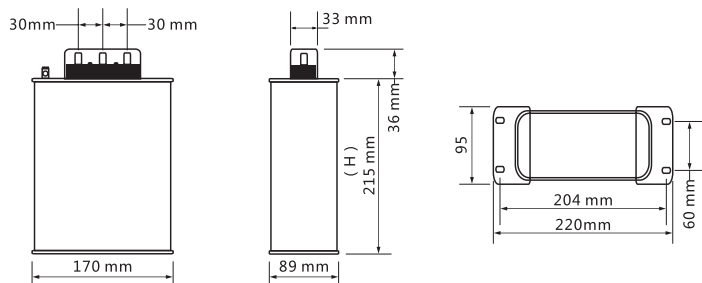
► Overall and mounting dimension

A型



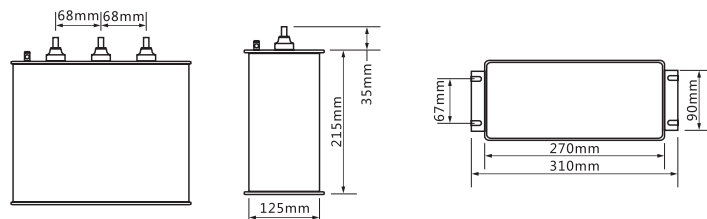
1-6(kvar) H=115mm
 7.5-8(kvar) H=135mm
 10-12(kvar) H=175mm
 14-16(kvar) H=215mm
 18-20(kvar) H=245mm

B型



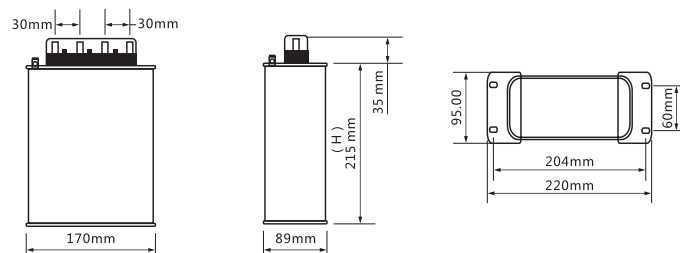
22-25(kvar) H=215mm
 30(kvar) H=245mm
 40(kvar) H=300mm

C型



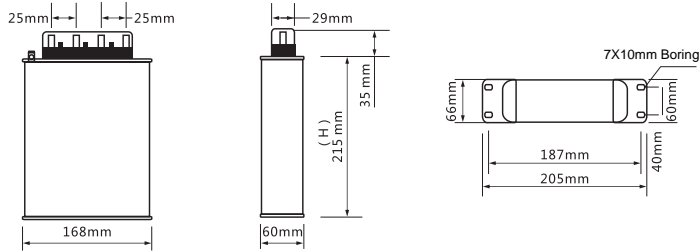
BSMJ0.4-50-3

D型



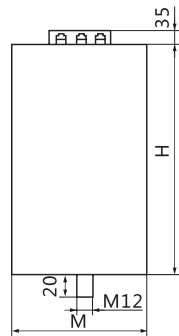
BSMJ0.23-X-3YN
 X=12(kvar) H=160mm
 X=15, 18(kvar) H=215mm
 X=21(kvar) H=245mm
 X=24(kvar) H=300mm

E型



BSMJ0.23-X-3YN
 X=3,6(kvar) H=135mm
 X=9(kvar) H=215mm

BSMJ(Y)、BZMJ(Y)



Model No. BSMJ(Y),BZMJ(J)	shell radius M(mm)	shell high H(mm)
0.4-10-3	76	240
0.4-12.5-3	76	240
0.4-14-3	86	240
0.4-15-3	86	240
0.4-16-3	86	240
0.4-18-3	96	240
0.4-20-3	96	240
0.4-25-3	116	280
0.4-30-3	116	280
0.45-10-3	76	240
0.45-12.5-3	76	240
0.45-14-3	86	240
0.45-15-3	86	240
0.45-16-3	86	240
0.45-18-3	96	240
0.45-20-3	96	240
0.45-25-3	106	240
0.45-30-3	116	280

▶ Notice

Please Notice following items in the order,

1 Name 2 Model No. 3 quantity 4 Voltage level(kV) 5 capacitor(kVAR) 6 Phases 7 Connection mode